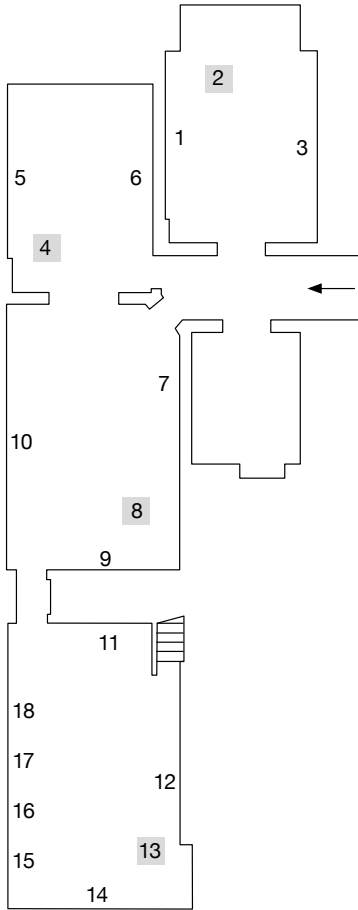


Glenn Brown

And thus we existed

31 October 2020 – 23 January 2021

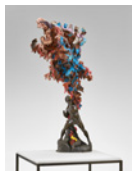
Bleibtreustrasse 45 and 15/16
10623 Berlin



Bleibtreustrasse 45



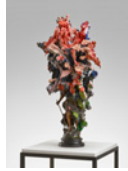
1
Myths of the Near Future
(Painting for Georgiana Houghton), 2019
oil and acrylic on panel
197.5 x 122 cm.;
77 3/4 x 48 in.



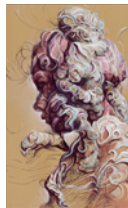
2
Resurrection Now, 2020
oil and acrylic over bronze
and stainless steel
120 x 61.5 x 56.5 cm.;
47 1/4 x 24 1/4 x 22 1/4 in



3
Cathedral Gin (after
Castiglione), 2020
oil and acrylic on panel
132 x 95 cm.;
52 x 37 3/8 in.



4
Olympus Mons, 2020
oil and acrylic over stainless
steel, spelter and wood
76.5 x 37 x 37 cm.;
30 1/8 x 14 5/8 x 14 5/8 in.



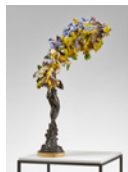
5
And Thus We Existed,
2019–2020
oil and acrylic on panel
197.6 x 122 cm.;
78 x 48 1/8 in.



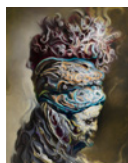
6
Drawing 2 (after
Delacroix/Raphael), 2019
acrylic paint on polyester
film over cardboard, in
artist's frame
109.2 x 94 x 6 cm.;
43 x 37 x 2 3/8 in.



7
Cemetery Lifestyle, 2020
acrylic on panel, in artist's
frame
107.5 x 75 x 9.5 cm.;
42 3/8 x 29 1/2 x 3 3/4 in.



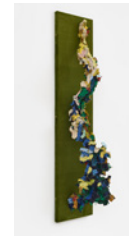
8
Damp Stars, 2020
oil and acrylic over stainless
steel, bronze and marble
110 x 56 x 56 cm.;
43 1/4 x 22 1/8 x 22 1/8 in.



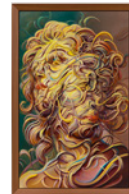
9
Deliver Me (after Jan
Lievens), 2020
oil and acrylic on panel
92 x 73.5 cm.;
36 1/4 x 29 in.



10
Black Ships Ate the Sky,
2020
oil and acrylic on panel
216 x 144 cm.;
85 1/8 x 56 3/4 in.



11
*In The Eyes of a Dancing
Beggar*, 2020
oil and acrylic over fibreglass,
plastic, stainless steel, velvet,
mdf and plexiglass
sculpture: 145 x 32.5 x 30 cm.;
57 1/8 x 12 3/4 x 11 3/4 in.
vitrine: 1550 x 425 x 355 cm.;
610 1/4 x 167 3/8 x 139 3/4 in.



12
*The Crystal Escalator in the
Palace of God Department
Store*, 2020
oil and acrylic on panel,
in artist's frame
213 x 138 x 9 cm.;
83 7/8 x 54 3/8 x 3 1/2 in.



13
Died in the Wool, 2020
oil and acrylic over fibreglass
and stainless steel, on bronze
91 x 74 x 75 cm.;
35 7/8 x 29 1/8 x 29 1/2 in.



14
Drawing 1 (after Boucher),
2020
Indian ink, coloured pencil and
acrylic on polyester film over
cardboard, in artist's frame
77 x 91 x 5 cm.;
30 1/4 x 35 7/8 x 2 in.



15
Drawing 2 (after Goltzius),
2020
Indian ink and acrylic on
polyester film over cardboard,
in artist's frame
62 x 53.4 x 5 cm.;
24 3/8 x 21 x 2 in.



16
Drawing 4 (after Delacroix),
2019
acrylic paint on polyester film
over cardboard,
in artist's frame
50.5 x 57 x 6 cm.;
19 7/8 x 22 3/8 x 2 3/8 in.



17
Drawing 3 (after Batoni), 2020
Indian ink and lead on
polyester film over cardboard,
in artist's frame
49.5 x 39.7 x 3.5 cm.;
19 1/2 x 15 5/8 x 1 3/8 in.



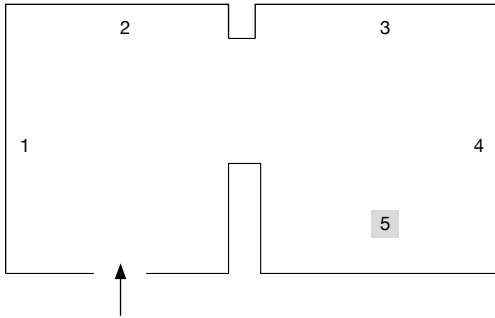
18
Drawing 9 (after Baselitz), 2017
Indian ink and acrylic on
polyester film over cardboard,
in artist's frame
59 x 47.2 x 3.8 cm.;
23 1/4 x 18 5/8 x 1 1/2 in.

Glenn Brown

And thus we existed

31 October 2020 – 23 January 2021

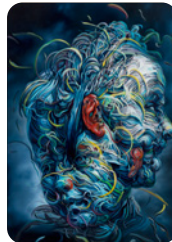
Bleibtreustrasse 45 and 15/16
10623 Berlin



Bleibtreustrasse 15/16



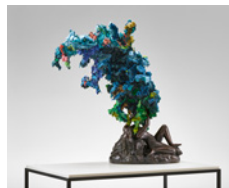
1
Bleating Shoe, 2020
acrylic on panel,
in artist's frame
57 x 67 x 6.8 cm.;
22 1/8 x 26 3/8 x 2 5/8 in.



4
Lactate (Midwinter), 2020
oil and acrylic on panel
200 x 141 cm.;
78 3/4 x 55 1/2 in.



2
Bring on the Headless Horses, 2020
oil and acrylic on panel
200 x 141 cm.;
78 3/4 x 55 1/2 in.



5
The Smell of Rain When the Twilight Was Leaving, 2020
oil and acrylic over bronze
and stainless steel
97.5 x 104 x 60 cm.;
38 3/8 x 41 x 23 5/8 in.



3
*Drawing 3 (after Pieneman/
Van Noordt)*, 2019
acrylic paint on polyester
film over cardboard,
in artist's frame
68 x 54 x 6 cm.;
26 3/4 x 21 1/4 x 2 3/8 in.