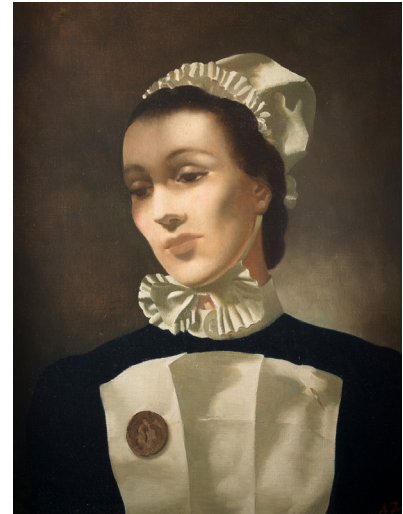
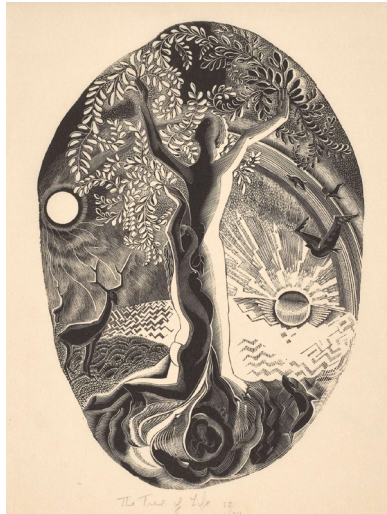


THE BROWN COLLECTION

Hoi Polloi

New Exhibition at London Museum which Connects Artists Across Centuries
24 September 2025 – 8 August 2026



- New exhibition explores how artists have captured ‘the people’ through drawing, mark-making and sculpture across five centuries
- Begins new direction for the museum, founded and curated by British artist Glenn Brown, as it establishes itself as a centre for art history lectures, artist talks, film screenings and life drawing classes
- Fully accessible, completely free museum in a historic London building and neighbourhood

This autumn, The Brown Collection presents *Hoi Polloi*, a major exhibition focused on how artists have captured ‘the people’ through drawing, mark-making and sculpture. Spanning a 440-year arc, the exhibition reveals how artists have used line, texture and touch to explore universal emotions and experiences.

Hoi Polloi unfolds thematically over four floors, with the opening theme, *The Ecstatic Mark*, anchoring the exhibition. Visitors will encounter works imbued with energy, intimacy and desire, from **Annie French**’s confetti-like drawings to **Pavel Tchelitchew**’s lyrical precision. This celebration of mark-making extends across the exhibition, through **Roger Hilton**’s chaotic gestures, **Hendrick Goltzius**’s exacting engravings, and the roughly worked clay surfaces of **Carmen Dionyse**.

Hoi Polloi explores the body, flesh and spirit, from the drama of the Baroque period to the fractured perspectives of the modern era. It pairs Italian masters **Giovanni Battista Tiepolo** (1696 – 1770) and **Bernardo Strozzi** (1581 – 1644) with English occultist **Austin Osman Spare** (1886 – 1956), united by their distinct depictions of the spiritual. In contrast, **Hans Bellmer** (1902 – 1975), **Anya Gallaccio** (b. 1963) and **Gillian Wearing** (b. 1963) use the body and flesh as a vehicle for exploring questions of identity.

The exhibition brings fresh attention to lesser-known yet visionary artists such as **Gertrude Hermes** (1901 – 1983), **Ann Churchill** (b. 1944), and **Boris Petrovich Sveshnikov** (1927 – 1998).

Works by Glenn Brown, founder of The Brown Collection, appear throughout, including previously unseen drawings and the title painting, *The Hoi Polloi* (2024). The exhibition's title, derived from the Greek for 'the people' or 'the many,' captures its central theme: exploring human experience through art. The works on show capture this preoccupation in striking, intimate and sometimes unsettling ways.

The exhibition examines the entwined relationship between humanity and nature, where bodies seem to dissolve into organic forms. In works like *The Holy Bible* (2023), a striking, acidic palette and the twisting silhouette of a tree conjure a vision of the natural world on the brink of transformation.

Glenn Brown said, *"I love the delicate, intimate movement of the hand as it draws a line. With Goltzius, for instance, you get this thrill of delicacy. Drawing has a freshness and passion, painting often doesn't."*



The Brown Collection

Free, welcoming and open to all, The Brown Collection is a museum funded and curated by a working artist, reflecting his authentic taste with the aim of bringing an ever-growing permanent collection to the public. Set over four floors of a converted mews building, the museum features work by historical and contemporary artists, interwoven with Glenn Brown's own work to illustrate connections that span centuries. Drawing from a dynamic collection that includes Old Masters, as well as 20th- and 21st-century artists, the museum is devoted to preserving and presenting historically significant works for education and appreciation.

Since opening in October 2022, The Brown Collection has evolved into a fully public-focused museum, offering free exhibitions and regular programmes of public events, including art history lectures, artist talks, life drawing workshops and film screenings. It has established itself as a centre for conversation and community in a London neighbourhood filled with history and culture. Nothing is for sale; this is a self-funded, self-governing museum which exists to bring the riches of its collection directly to the public.

Visitor Information

Location: The Brown Collection, 1 Bentinck Mews, Marylebone, London W1U 2AF

Exhibition: 24 Sep 2025 – 8 Aug 2026 (collection works will rotate)

Opening hours: Wednesday – Saturday, 10.30 am – 6 pm

Admission: Free | No booking required

The Brown Collection accommodates all accessibility needs

Instagram: [@thebrown_collection](https://www.instagram.com/thebrown_collection)

For more information please visit

[Website](#) or [exhibition page](#)

Notes for Editors

Glenn Brown

Glenn Brown CBE, (born Hexham 1966) is known for the use of art historical references in his paintings. Starting with reproductions from other artists' works, Brown transforms the appropriated image by changing its colour, position and size.

His work has been the subject of numerous solo exhibitions including Domaine de Kerguéhennec, Centre d'Art Contemporain, France (2000); Serpentine Gallery, London (2004); Kunsthistorisches Museum, Vienna (2008); Tate Liverpool, England (2009), which travelled to the Fondazione Sandretto Re Rebaudengo, Turin and Ludwig Múzeum, Budapest; Frans Hals Museum, Haarlem, The Netherlands (2013); Rennie Collection, Vancouver (2013); Fondation Vincent Van Gogh Arles (2016); Des Moines Art Center, Iowa (2016); Contemporary Art Center, Cincinnati (2016); Rembrandt House, Amsterdam (2017); Museo Stefano Bardini, Florence (2017); Laing Art Gallery, Newcastle, UK (2018); British Museum, London (2018); Sprengel Museum and Landesmuseum, Hanover, Germany (2023) and Freud Museum, London (2025). Upcoming solo shows include Holburne Museum, Bath, UK (2026) and Gainsborough House, Suffolk, UK (2026). His work is represented by Gagosian in New York and London and Galerie Max Hetzler in Berlin and Paris.

In 2022, he and his husband, Edgar Laguinia established The Brown Collection in the heart of London's Marylebone district.

Images

[Download Press Images](#)

Glenn Brown, *When the Satellite Sings*, 2024 © Photograph by Lucy Dawkins
Gertrude Hermes, *The Tree of Life*, date unknown © Photograph by The Brown Collection
Anna Zinkeisen, *Portrait of a Nurse*, date unknown © Photograph by The Brown Collection
Installation shot of Hoi Polloi © Photograph by The Brown Collection
The Brown Collection Exterior © Photograph by Lucy Dawkins

Press

Michael Barrett
The Press Office
07813 558772
mfbpressoffice@gmail.com